



Mauser part of \$192 million in planned projects

VOLUME | 02
ISSUE | 03
DATE | August 2017

Mauser USA, LLC will invest \$10 million and create 28 jobs in Geismar. The company received approval to operate a 40,000 square-foot packaging and logistics facility in the Talon Industrial Park. Average annual salary for the new jobs will be more than \$58,000. A possible second phase could result in another 19 jobs. Mauser will produce custom engineered plastic containers for the chemical industry.

In addition to Mauser, four local companies filed applications for five expansion and/or equipment upgrade projects requesting industrial tax exemptions during the second quarter of 2017. The total investment of all five projects is \$192.3 million. The projects will create 1,455 construction jobs and 93 permanent jobs.

In May, Honeywell completed a \$300 million mobile refrigerants facility in Geismar that was announced in 2013. The company has created 55 new jobs. The mobile refrigerant manufactured at the site will reduce greenhouse gas impact by vehicles by more than 99 percent.

Parish Economic Development Briefs

Employment Gains Continue

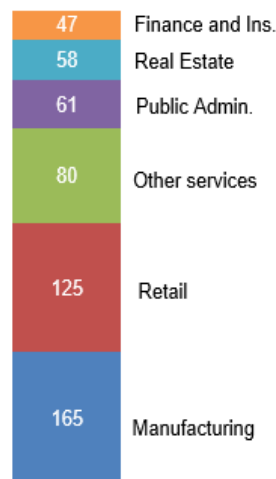
For the latest reported month (June), total employment in the parish was 58,558; an increase of 27 jobs from a year ago and up 1,131 from January. The parish unemployment rate in June was 4.9%, up 0.3 points from May; Louisiana's rate was 5.9%, up 0.4 points from May; and the nation's was 4.4%.

Monthly sales tax collections for the first 4 months in 2017 were \$56.7 million, down 2.2% from last year. Home sales increased by 7.5% in April versus a year ago as inventory falls. Year over year, more houses have been listed for sale, and the median sale price has increased 2.5%.

Staff met with 10 local companies during the second quarter of 2017; and 26 year-to-date at which three companies have expressed interest in expanding. The staff has a goal to reach out to 50 by the end of the year.

Top Growth Sectors 4th Qtr. 2015 - 4th Qtr. 2016

Jobs Added



Power Week to Feature Workshops and Resources for Entrepreneurs and Small Business

The weeklong event will bring the "Power of Peer Learning" to Gonzales, Sorrento, Donaldsonville, and Prairieville. Saturday, August 12th will kick-off the week with a Super Woman's Conference at the Lamar Dixon Expo Center including motivational speakers, exhibits and fashion show. For a full calendar of events and to register visit:

Facebook @smallbizpowerweek
or email: mbece@mbece.org

AEDC Board of Directors

Dwight Poirrier, Chairman
Don Hanna, Vice Chair
Dee LeJeune, Secretary/Treasurer

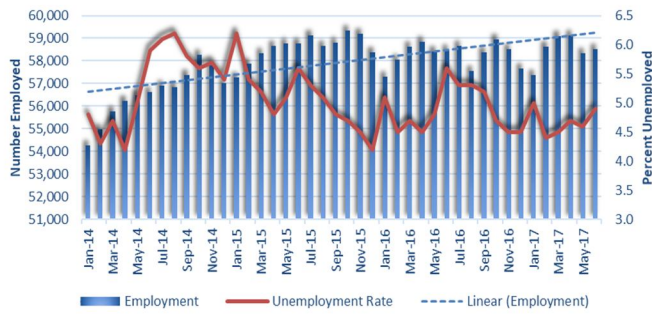
Kirk Boudreaux
Janet Britton
John Cagnolatti
Derrick Coco
Bill Dawson
Douglas Diez

Roger Keese
Brent Landry
Chuck LeBlanc
Donald Schexnaydre
Kevin Schexnayder

what's new in Ascension is our quarterly newsletter. If you would like to be added to our mailing list, please send an email to: mtailon@ascensionedc.com.

ECONOMIC UPDATE

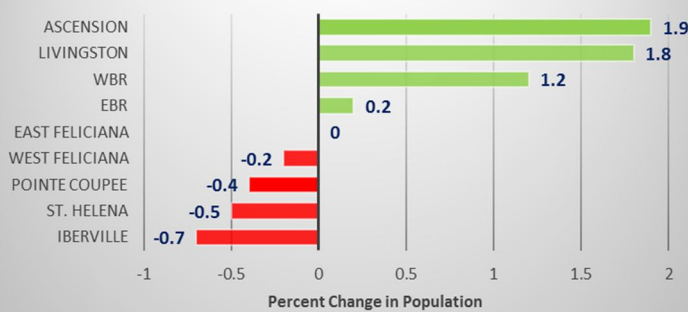
June employment increases, making 2 months in a row of gains



2017 sales tax collection through April \$1.26 MM lower than first 4 months in 2016



Ascension Parish Leads Capital Region Population Growth, July 1, 2015-16 Source: US Census

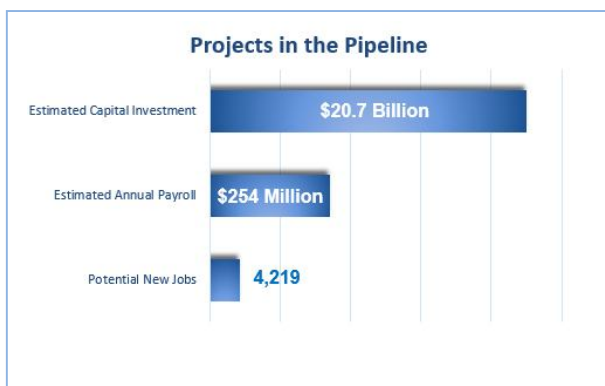


Home sales up 7.5% in April versus year ago, inventory falls

	Apr-16	Apr-17
New Listings	198	206
Pending Sales	187	162
Closed Sales	160	172
Median Sale Price	\$210,000	\$215,223
Pct. List Price Received	99.2%	98.2%
Days on Market	48	44
Inventory of Homes for Sale	421	430
Months Supply	2.7	2.7

Sources: Louisiana Workforce Commission and Bureau of Labor Statistics for employment and wage data, AEDC for project information, the Greater Baton Rouge Association of Realtors for housing data, and BRAC for sales tax data.

PROJECTS IN THE PIPELINE



Projects in the Pipeline represents potential projects discussed or inquiries made to AEDC that may occur over the next several years. Based on current project information, AEDC estimates these projects have the potential to create 4,219 jobs, an estimated payroll of \$254 million, and new capital investment of \$20.7 billion.

For a list of available buildings and sites within the parish visit our home page at: <http://www.ascensionedc.com>